

fold the top to  
create the lantern

fold the  
nails of the  
dome and  
use the  
wings to  
link them  
each other

glue

cut along  
the outline

cut along  
the outline

space to  
close with  
the entrance

# OGNISSANTI CHURCH

ALSO KNOWN AS "TEMPIO" (TEMPLE)

VENICE  
1787

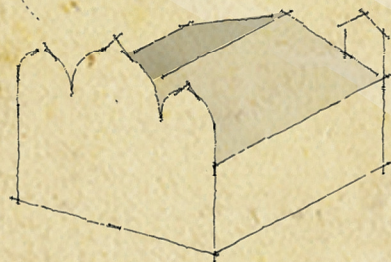
SPECIAL 01



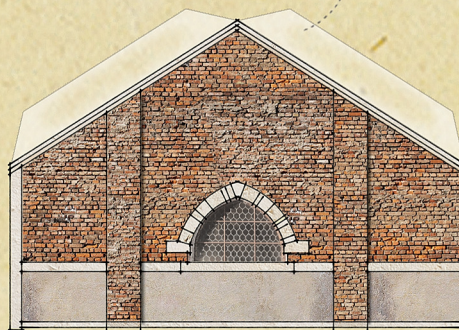
OONIRICO.COM



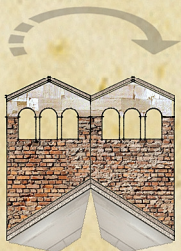
the facade is  
higher than  
the roof.



glue



cut along  
the outline



bell tower  
to fix to  
the roof



glue

fold the rear of the  
facade and follow  
the alignment to  
fix the roof.

bell tower  
to fix to  
the roof

cut along  
the outline



fold the rear of the  
facade and follow  
the alignment to  
fix the roof.

## BASILICA DI SAN PAOLO CHURCH

VENICE  
1737

SPECIAL 02



OONIRICO.COM



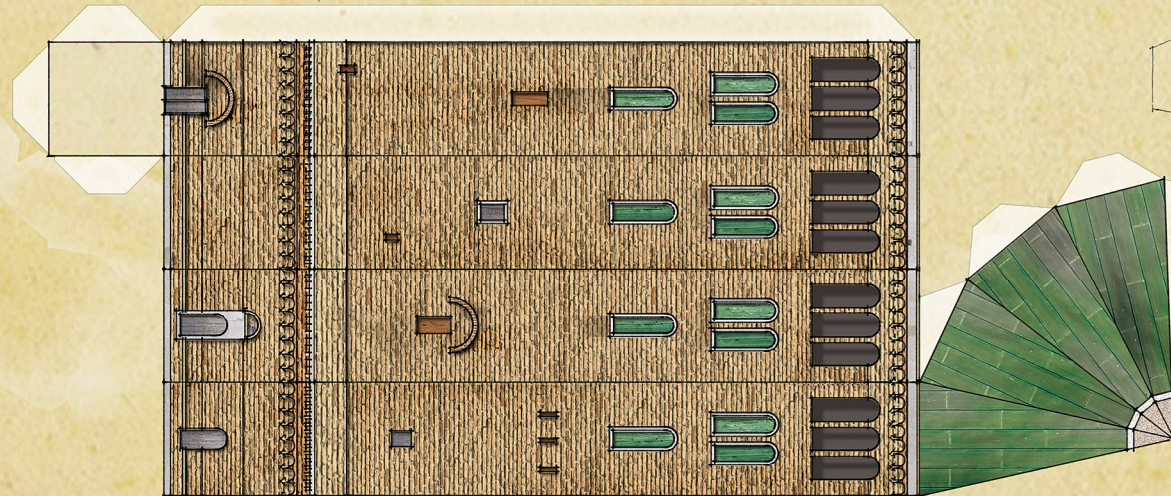
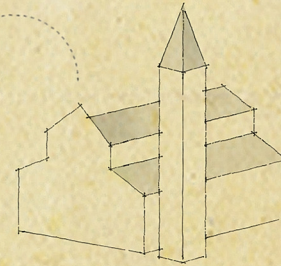
# SANTA MARIA VERGINE AI PRATI

## AND BELL TOWER



cut along  
the outline

the main  
elevation is  
higher than  
the roof



VENICE  
1737

SPECIAL 03



OONIRICO.COM